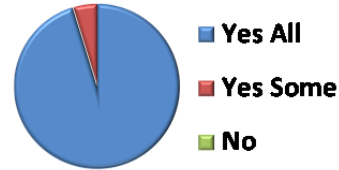


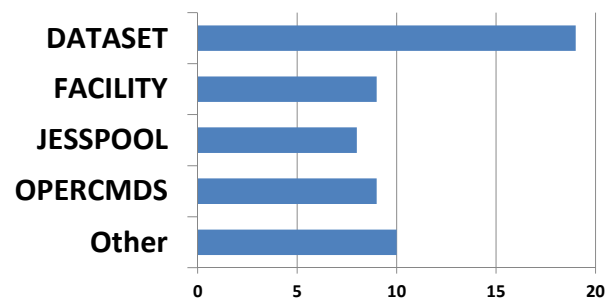
Are any classes active in the Global Access Table (GAT) on your z/OS production systems?

Responses	Count	Percent %
Yes on all systems	20	95.2%
Yes on some systems	1	4.8%
No	0	0%
Total	21	100%



What classes are active in the Global Access Table (GAT)? (Check all that apply)

Responses	Count	%
DATASET	19	95.0%
FACILITY / XFACILIT	9	45.0%
JESSPOOL	8	40.0%
OPERCMDS	9	45.0%
Other:	10	50.0%
Total	20	

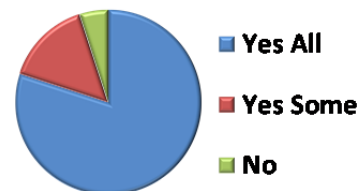


Other:

- JESJOBS (4)
- DSNR (1)
- PTKTDATA, PTKTVAL (1)
- TSOAUTH (3)
- SDSF (1)
- Long list (2)

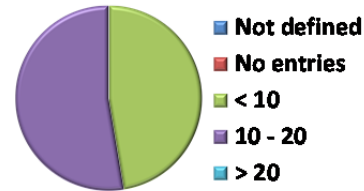
Are any profiles defined in the GLOBAL class on your production z/OS systems?

Responses	Count	Percent %
Yes on all systems	16	80.0%
Yes on some systems	3	15.0%
No	1	5.0%
Total	20	100%



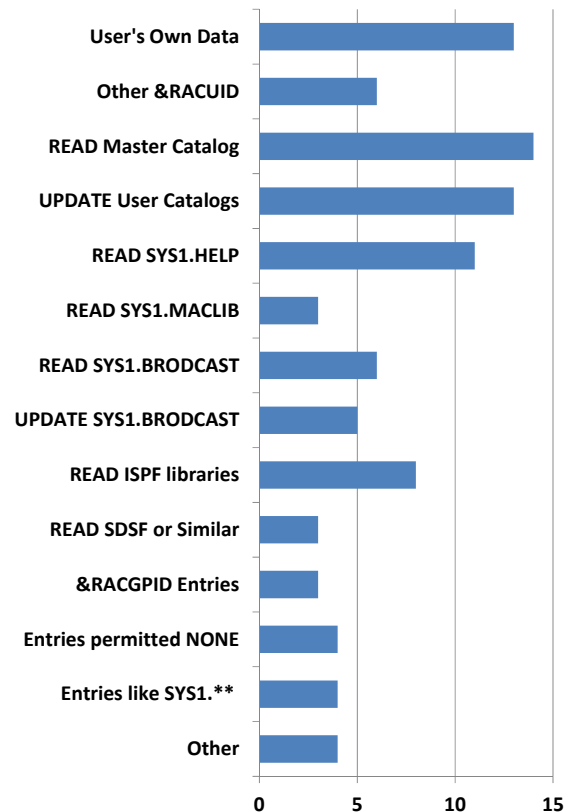
Is the GLOBAL profile DATASET defined on any of your production systems, and if yes, on average, how many entries are defined in this profile?

Responses	Count	Percent %
Not defined	0	0%
Defined but no entries	0	0%
Less than 10 entries	9	47.4%
10 to 20 entries	10	52.6%
Over 20 entries	0	0%
Total	19	100%



What types of entries do you have in the GLOBAL DATASET profiles on your production z/OS systems? Check all that apply.

Responses	Count	Percent %
ALTER access to a user's own datasets (e.g., &RACUID.**)	13	72.2%
Entries containing &RACUID other than the above	6	33.3%
READ access the Master Catalog	14	77.8%
UPDATE access to User Catalogs	13	72.2%
READ access to SYS1.HELP	11	61.1%
READ access to SYS1.MACLIB	3	16.7%
READ access to SYS1.BROADCAST	6	33.3%
UPDATE access to SYS1.BROADCAST	5	27.8%
READ access to ISPF libraries	8	44.4%
READ access to SDSF (or equivalent product) libraries	3	16.7%
Entries containing &RACGPID	3	16.7%
Entries permitted NONE	4	22.2%
Entries like SYS1.** allowing READ access to many system datasets	4	22.2%
Other	4	22.2%
Total	18	

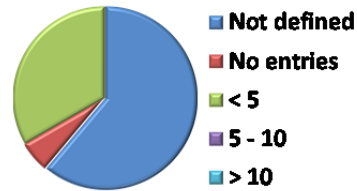


Other:

- READ access to application libraries and company CLIST/EXEC datasets
- JES2 PROCLIB DATASETS/READ
- More specific SYS1 entries with NONE to align with the UACC of the actual dataset profile
- Read to non-ibm linklist datasets; Alter access to SCLM developer datasets with &RACUID in the name

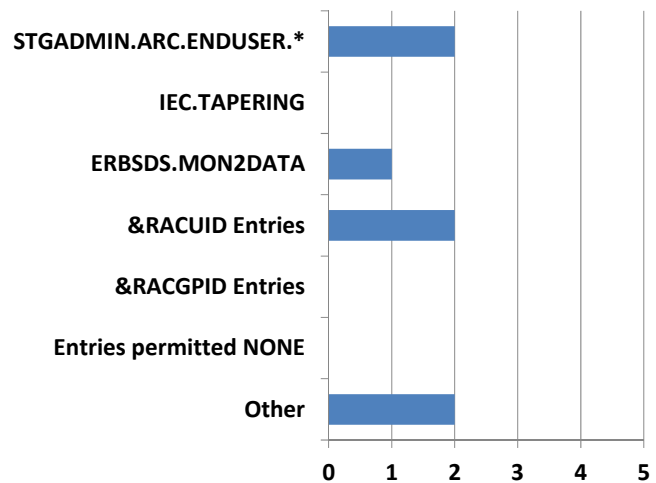
Is the GLOBAL profile FACILITY defined on any of your production systems, and if yes, on average, how many entries are defined in this profile?

Responses	Count	Percent %
Not defined	11	61.1%
Defined but no entries	1	5.6%
Less than 5 entries	6	33.3%
5 to 10 entries	0	0%
Over 10 entries	0	0%
Total	18	100%



What types of entries do you have in the GLOBAL FACILITY profiles on your production z/OS systems? Check all that apply.

Responses	Count	Percent %
READ access to DFSMSHsm End-user commands (e.g., STGADMIN.ARC.ENDUSER.*)	2	33.3%
READ access to skip tape ring check (e.g., IEC.TAPERING)	0	0%
READ access to RMF data (e.g., ERBDS.MON2DATA)	1	16.7%
Entries containing &RACUID	2	33.3%
Entries containing &RACGPID	0	0%
Entries permitted NONE	0	0%
Other	2	2%
Total	6	

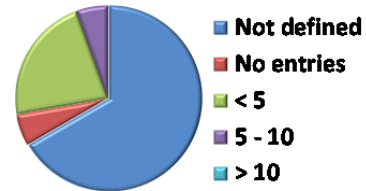


Other:

- STGADMIN.IGG.CATALOG.SECURITY.BOTH/READ
- Control-M \$\$JOBORD & \$\$JOB3EDI with &RACUID Obsolete entries for \$PREFIX

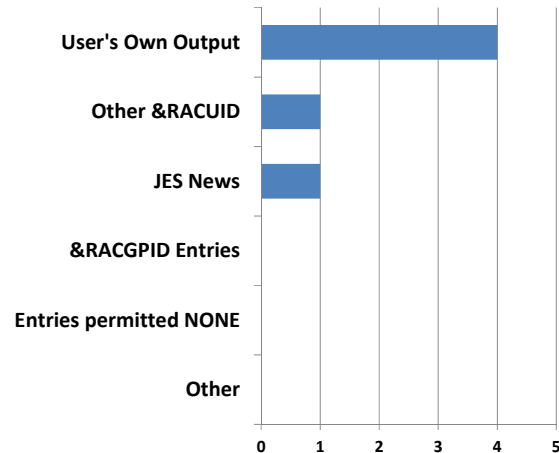
Is the GLOBAL profile JESSPOOL defined on any of your production systems, and if yes, on average, how many entries are defined in this profile?

Responses	Count	Percent %
Not defined	12	66.7%
Defined but no entries	1	5.6%
Less than 5 entries	4	22.2%
5 to 10 entries	1	5.6%
Over 10 entries	0	0%
Total	18	100%



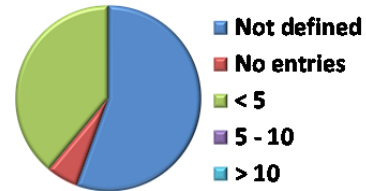
What types of entries do you have in the GLOBAL JESSPOOL profiles on your production z/OS systems? Check all that apply.

Responses	Count	Percent %
ALTER access to a user's own spool output (e.g., *.&RACUID.**)	4	80.0%
Entries containing &RACUID other than the above	1	20.0%
READ access to JES News (e.g., *.*.\$JESNEWS.**)	1	20.0%
Entries containing &RACGPID	0	0%
Entries permitted NONE	0	0%
Other	0	0%
Total	5	



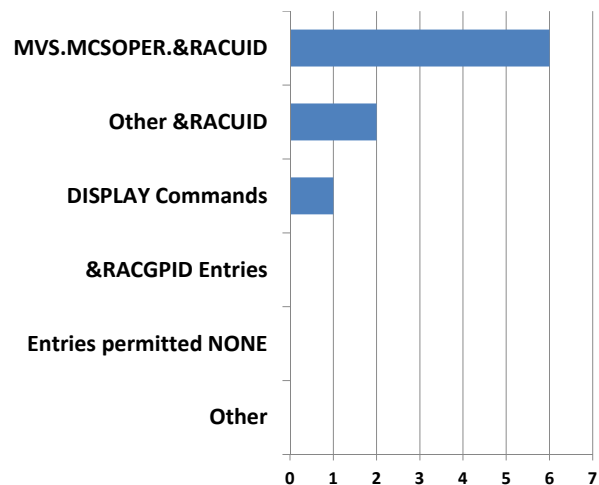
Is the GLOBAL profile OPERCMDS defined on any of your production systems, and if yes, on average, how many entries are defined in this profile?

Responses	Count	Percent %
Not defined	10	55.5%
Defined but no entries	1	5.6%
Less than 5 entries	7	38.9%
5 to 10 entries	0	0%
Over 10 entries	0	0%
Total	18	100%



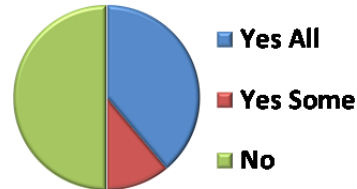
What types of entries do you have in the GLOBAL OPERCMDS profiles on your production z/OS systems? Check all that apply.

Responses	Count	Percent %
READ access to a user's own MCS console (e.g., MVS.MCSOPER.&RACUID)	6	85.7%
Entries containing &RACUID other than the above	2	28.6%
READ access to DISPLAY type commands (e.g., MVS.DISPLAY.command, JES2.DISPLAY.command)	1	14.3%
Entries containing &RACGPID	0	0%
Entries permitted NONE	0	0%
Other	0	0%
Total	7	



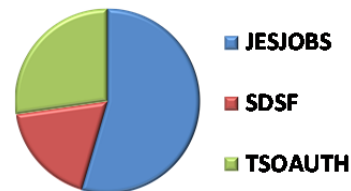
Aside from DATASET, FACILITY, JESSPOOL, and OPERCMDS, do you have any other profiles defined in the GLOBAL class on your production z/OS systems?

Responses	Count	Percent %
Yes on all systems	7	38.9%
Yes on some systems	2	11.1%
No	9	50.0%
Total	18	100%



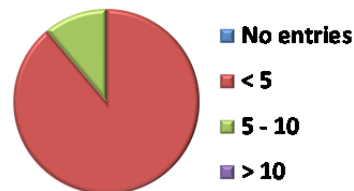
What other profiles are defined in the GLOBAL class on your production z/OS systems?

Responses	Count	Percent %
JESJOBS	6	66.7%
SDSF	2	22.2%
TSOAUTH	3	33.3%
Total	9	



On average, how many entries do you have in the other GLOBAL profiles on your production z/OS systems?

Responses	Count	Percent %
No entries	0	0%
Less than 5 entries	8	88.9%
5 to 10 entries	1	11.1%
Over 10 entries	0	0%
Total	9	100%



Briefly describe the entries you have in the other GLOBAL profiles on your production z/OS systems?

Responses	
JESJOBS CANCEL.*.&RACUID.*	
JESJOBS SUBMIT.*.&RACUID*.&RACUID	
TSOAUTH RECOVER	
TSOAUTH JCL	
JESJOBS CANCEL.&RACLNDE.*.&RACUID%/ALTER	
JESJOBS CANCEL.&RACLNDE.*.&RACUID%/ALTER	
JESJOBS SUBMIT.&RACLNDE.&RACUID%.*/*READ	
JESJOBS SUBMIT.&RACLNDE.&RACUID%.*/*READ	
Entry containing &RACUID	
JESJOBS SUBMIT.*.&RACUID*.&RACUID/READ	
Total	4