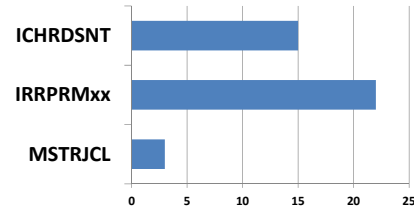


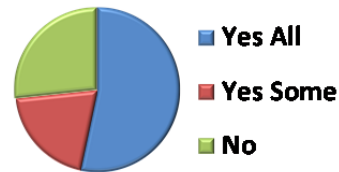
How are you allocating your various RACF database datasets on your z/OS production systems? (Check all that apply.)

Responses	Count	Percent %
ICHRDSNT	15	45.5%
PARMLIB(IRRPRMxx)	22	66.7%
MSTRJCL SYSRACF DD	3	9.1%
Total	33	



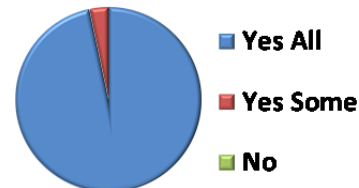
Do you have plans on migrating ICHRDSNT to PARMLIB(IRRPRMxx)?

Responses	Count	Percent %
Yes on all systems	8	53.3%
Yes on some systems	3	20.0%
No	4	26.7%
Total	15	100%



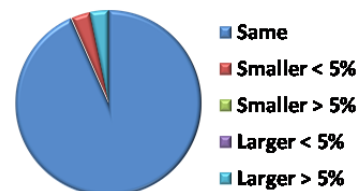
Are your RACF database backup datasets active?

Responses	Count	Percent %
Yes on all systems	29	53.3%
Yes on some systems	1	20.0%
No	0	26.7%
Total	30	100%



In general, how does the size of your backup datasets compare to your primary datasets?

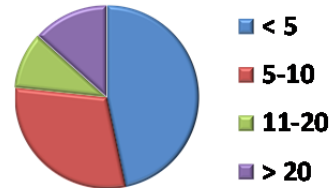
Responses	Count	Percent %
Same size	28	93.4%
Smaller by no more than 5%	1	3.3%
Smaller by more than 5%	0	0%
Larger by or more than 5%	0	0%
Larger by more than 5%	1	3.3%
Total	30	100%



Special thanks to Mark Nelson of IBM for his assistance in designing and testing this survey.

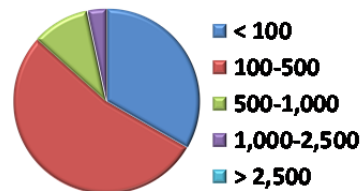
Approximately how many RACF databases do you support?

Responses	Count	Percent %
Less than 5	14	46.7%
5 to 10	9	30.0%
11 to 20	3	10.0%
Over 20	4	13.3%
Total	30	100%



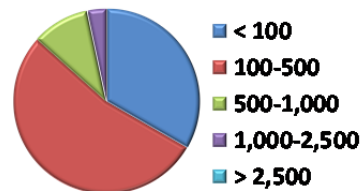
What is the average size of your various RACF primary datasets?

Responses	Count	Percent %
Less than 100 cylinders	10	33.3%
100 to 500 cylinders	16	53.4%
500 to 1,000 cylinders	3	10.0%
1,000 to 2,500 cylinders	1	3.3%
Over 2,500 cylinders	0	0%
Total	30	100%



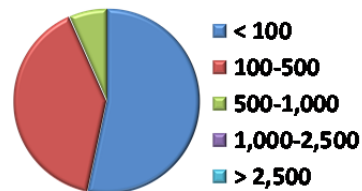
What is the size of your largest RACF primary dataset?

Responses	Count	Percent %
Less than 100 cylinders	11	36.7%
100 to 500 cylinders	15	50.0%
500 to 1,000 cylinders	2	6.7%
1,000 to 2,500 cylinders	1	3.3%
Over 2,500 cylinders	1	3.3%
Total	30	100%



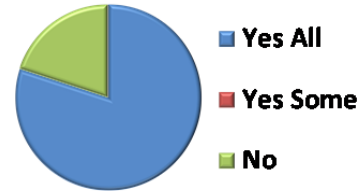
What is the size of your smallest RACF primary dataset?

Responses	Count	Percent %
Less than 100 cylinders	16	53.3%
100 to 500 cylinders	12	40.0%
500 to 1,000 cylinders	2	6.7%
1,000 to 2,500 cylinders	0	9%
Over 2,500 cylinders	0	0%
Total	30	100%



Are your database datasets allocated as physical sequential unmovable (Organization PSU)?

Responses	Count	Percent %
Yes on all systems	24	80.0%
Yes on some systems	0	0%
No	6	20.0%
Total	30	100%



On average, what percent full are your RACF database primary datasets?

Responses	Count	Percent %
Less than 25%	6	20.0%
25% to 50%	15	50.0%
50% to 75%	6	20.0%
Over 75%	3	10.0%
Total	30	100%

